



NEVADA SAGEBRUSH  
ECOSYSTEM PROGRAM



# Sagebrush Ecosystem Program Update

*Kelly McGowan, Program Manager*

**Sagebrush Ecosystem Council**

**August 13, 2020**

*sagebrusheco.nv.gov*



# Conservation Credit Projects

- 22 credit projects
- 13 project proponents participating in State sponsored funding
- 9 project proponents are self funded
- Every project has very high suitability for sage-grouse
- Over 110,000 acres enrolled (within 6 counties)



**Kelly McGowan**  
*Program Manager*

**Jim Lawrence**  
*Deputy Director*

**Bradley Crowell**  
*Director*

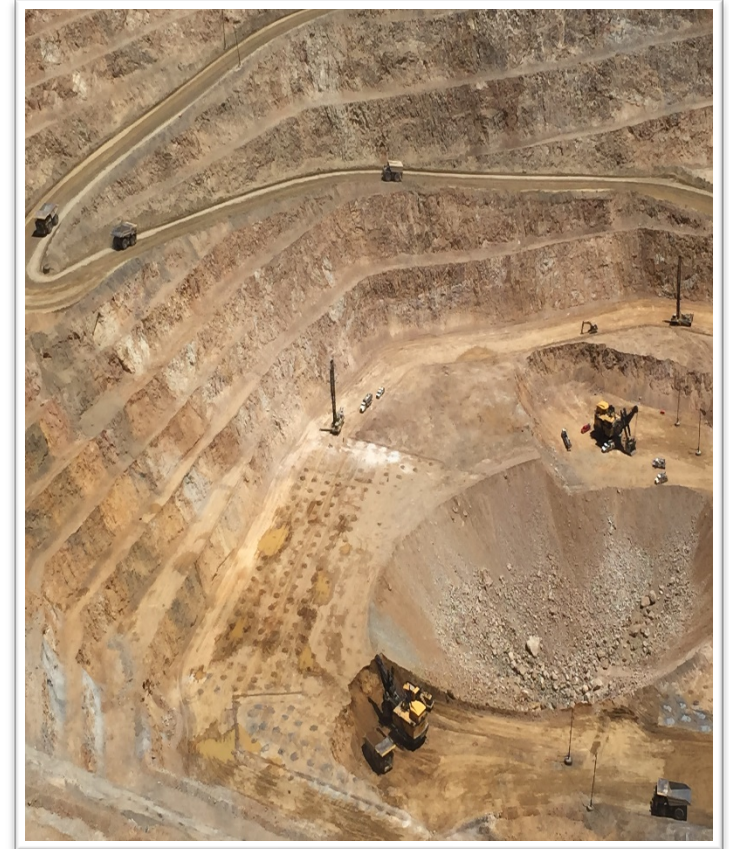


Nevada Department of  
**CONSERVATION &  
NATURAL RESOURCES**



# Debit Projects

- 22 active debit projects
- 19 additional projects in early planning stages
- They include mining, solar, exploration (mineral, oil and gas), geothermal, pipelines, and overhead powerlines
- 8 projects have completed mitigation
- 4 currently developing mitigation plans



**Kelly McGowan**  
*Program Manager*

**Jim Lawrence**  
*Deputy Director*

**Bradley Crowell**  
*Director*



Nevada Department of  
**CONSERVATION &  
NATURAL RESOURCES**



# Transfers and Sales with the CCS

- **8 total transactions** through the CCS
  - 3 of those were internal transfers
  - 5 were private sales
- These 8 transactions alone account for over 20,000 acres of prime sage-grouse habitat conserved
- **41 debit projects** represent a four-fold increase since October 2019
- Funding for **5 new credit projects** approved in December 2019

Kelly McGowan  
Program Manager

Jim Lawrence  
Deputy Director



Bradley Crowell  
Director



Nevada Department of  
**CONSERVATION &  
NATURAL RESOURCES**



# Outlook for the Program

- Encourage development of public land credit project(s)
- Implement Conservation Planning Tools
- Develop priority conservation areas
- Dedicate resources, as funding allows, to address resource concerns



- Population and habitat adaptive management
- Application of best available science

**Kelly McGowan**  
*Program Manager*

**Jim Lawrence**  
*Deputy Director*

**Bradley Crowell**  
*Director*



Nevada Department of  
**CONSERVATION &  
NATURAL RESOURCES**

# AUGUST 2020 CCS UPDATES • STATUS OF CREDIT PROJECTS

PROJECT NAME (# ON MAP)	CREDITS	COUNTY	ACRES CONSERVED	WAFWA MGMT. ZONE	STATE SEED FUNDED
<b>TRANSFERRED CREDITS</b>					
<b>Cottonwood Ranch</b>	3	Elko	6	IV	Yes
<b>Crawford Cattle – Sonoma</b>	467	Humboldt	1,498	III	Yes
<b>Crawford Cattle – Snowstorms</b>	522	Elko, Humboldt	2,600	IV	Yes
<b>Estill Ranch</b>	22	Washoe	346	V	No
<b>Tumbling JR Ranch*</b>	2,514	Elko, White Pine	5,868	III	Yes
<b>West IL Ranch*</b>	248	Elko	158	IV	No
<b>TOTAL</b>	<b>3,776</b>		<b>10,476</b>		
<b>AVAILABLE CREDITS</b>					
<b>Cottonwood Ranch</b>	708	Elko	1,002	IV	Yes
<b>Crawford Cattle – Snowstorms</b>	1,353	Elko, Humboldt	7,931	IV	Yes
<b>Estill Ranch</b>	618	Washoe	2,706	V	No
<b>Eureka Livestock</b>	1,718	Eureka	1,623	III	Yes
<b>Heguy Ranch</b>	766	Elko	6,490	IV	Yes
<b>Humboldt Ranch - Hot Lake*</b>	694	Elko	198	IV	No
<b>Johns Ranch</b>	164	Elko	1,073	IV	Yes
<b>RDD</b>	740	Humboldt	1,094	V	Yes
<b>Tumbling JR Ranch*</b>	1,663	Elko, White Pine	3,882	III	No
<b>West IL Ranch*</b>	2,180	Elko	1,539	IV	No
<b>TOTAL</b>	<b>10,604</b>		<b>27,538</b>		
<b>ANTICIPATED CREDITS</b>					
<b>Adobe Peak*</b>	TBD	Elko	10,901	IV	No
<b>Cave Valley Ranch</b>	TBD	Lincoln	1,769	III	No
<b>Coleman Valley Ranch</b>	TBD	Washoe	1,137	V	Yes
<b>Crawford Cattle – Calico Mtn</b>	TBD	Humboldt	5,131	IV	Yes
<b>East IL Ranch*</b>	TBD	Elko	23,721	IV	No
<b>Foster Ranch</b>	TBD	Humboldt	6,094	V	Yes
<b>Getch Lands</b>	TBD	Humboldt	6,229	IV	No
<b>Humboldt Ranch – ToeJam*</b>	TBD	Elko	5,330	IV	No
<b>Owl Creek Ranch</b>	TBD	Elko	5,351	III	Yes
<b>Secret Pass Ranch</b>	TBD	Elko	10,421	III, IV	Yes
<b>Washoe Livestock</b>	TBD	Washoe	799	V	No
<b>TOTAL</b>	<b>~29,083</b>		<b>76,883</b>		
<b>CUMULATIVE TOTAL</b>	<b>~43,463</b>		<b>114,897</b>		

\* Indicates credit projects intended for internal transfers.

# AUGUST 2020 CCS UPDATES • STATUS OF DEBIT PROJECTS

PROJECT NAME (# ON MAP)	TOTAL DEBITS*	COUNTY	ACRES OF DIRECT IMPACT	WAFWA MGMT. ZONE
<b>DEBITS MITIGATED</b>				
Avocado Exploration	38	Eureka	68	III
Bald Mountain Mine – Phase 1	2,514	White Pine	2,521	III
Baltazor	254	Humboldt	0	V
Couer Rochester	594	Pershing	2,567	III
Greater Phoenix	211	Lander	513	III
Greater Phoenix – Philadelphia Expansion	4	Lander	203	III
Midas Exploration	19	Elko	50	IV
Newcrest Exploration – Phase 1	3	Elko	10	IV
<b>TOTAL</b>	<b>3,637</b>		<b>5,932</b>	
<b>DEBITS OUTSTANDING/ANTICIPATED</b>				
Bald Mountain Mine – Later Phase	2,737	White Pine	2,745	III
Big Ledge	TBD	Elko	TBD	IV
Carlin Vanadium Exploration	62	Elko	TBD	III
Fish Springs Solar	51	Washoe	10	V
Gibellini	TBD	Eureka, Nye, White Pine	TBD	III
Goldrush	TBD	Eureka, Lander	TBD	III
Lone Tree Mine – Buffalo Mtn	675	Humboldt	0	III
Long Canyon Mine – Phase 2	1,957	Elko	815	III, IV
Marigold	0	Humboldt, Lander	0	III
McGinness Hills – Phase IV	TBD	Lander	TBD	III
National Exploration	30	Humboldt	40	IV
Newcrest Exploration – Phase 2	TBD	Elko	TBD	IV
Pony Creek Exploration	131	Elko	150	III
Relief Canyon	TBD	Lander	TBD	III
Robertson	TBD	Lander	TBD	III
Robinson	TBD	White Pine	TBD	III
Round Mtn	TBD	Nye	TBD	III
Scruffy Oz	TBD	Lander	TBD	III
Spring Valley	TBD	Pershing	TBD	III
TSPP	4	Elko, Eureka	1	IV
Twin Creeks Mine – Sage Tailings	33	Humboldt	0	IV
Western Lithium	1,375	Humboldt	5,169	V
<b>TOTAL</b>	<b>7,055</b>		<b>8,930</b>	
<b>CUMULATIVE TOTAL</b>	<b>10,692</b>		<b>14,862</b>	

\* Indicates total debits as opposed to corresponding credits required to offset them, which depends on proximity and permanent debits.